

IKEDA SHIYAKUSHOMAE CLINIC⁺

IKEDA SHIYAKUSHOMAE CLINIC

‘Clinic you can visit with confidentiality’ – under this concept, a practicing psychiatrist has opened his clinic in Ikeda City in Japan. The newly refurbishing 61 square meter rented space is located on the second floor of the mix-used building in front of Ikeda City Hall, within two minute walk from Hankyu Ikeda station.

ENERGY FROM THE ARTWORKS

Considering that some patients coming to a psychiatric clinic hesitate to step inside and directly face the reception, the reception has been located on the side of the lobby to avoid directly facing patients coming in. Instead, the artworks displayed on the front wall are expected to play a role to welcome the patients pleasantly, with their colours giving the patients some positive energy. The architect and the doctor chose the artworks created by Ms. Kiyomi Irie as they are powerful, gentle, and vitalising. The wine red curtain behind the reception was selected to be colour co-ordinated with the artworks to enhance the first impression of the entrance lobby, and create a healing environment.

NOISELESS

For the patients, it is important to feel that they are not abandoned but taken good care of. To support the care principle, the design concept was set to create ‘noiseless’ space by cleaning up all unnecessary visual elements to welcome patients. The environment was designed with a conscious decision to keep a good balance to create simplicity without any luxurious decorations or too much tension; with a little tendency towards minimalism. Skirting and door frame details were neatly designed. A simple and gentle form of chair was selected. The length of the legs has been altered to enhance the patient’s relaxation. The layout of the chairs, even the distance between them, was determined through discussion with the doctor. Visual clutter, so-called ‘noise’, making an uncomfortable feeling has been removed as much as possible. Sound environments were also carefully considered. Sound-absorbing fabrics are placed on the wall in the calm waiting area. The walls and door sets around the consultation room use a sound proof type for patient confidentiality.

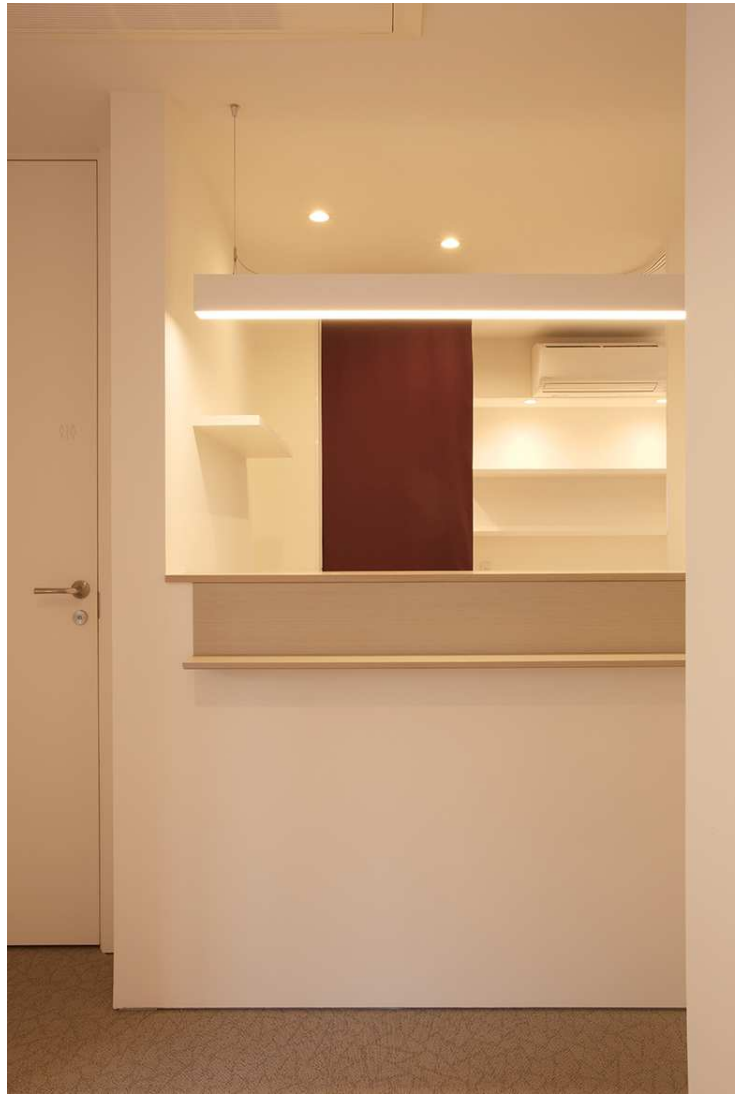
FLEXIBILITY

Within the limited tenant space of the deep plan, the first priority was given to the patient’s area, such as the waiting area and the entrance hall, to have maximum space with natural light. The challenge was to make staff areas, such as the examination room and the office, comfortable despite the tight area with very little natural light. To maximize flexibility in the area for separating each room, panel curtains of translucent fabric and the blinds, in addition to the standard hospital curtain were used. It was imagined that the panel curtains could be easily managed by the staff to control according to the privacy and the room sizes as they need. As the examination room is usually not in use in this clinic, the blinds between the examination room and the office can be fully opened to make the rooms more spacious. The panel curtains are made of metal-look lace fabrics that give architectural impression even in the back corridor.

In the waiting area, a white board/ projector of 2500mm wide is built in the wall so that the room can also be used in various situations such as staff meetings, seminars, and even lectures open to visitors.

(Yumi Zoraku/ FIVES, translated by Junko Kurihara)

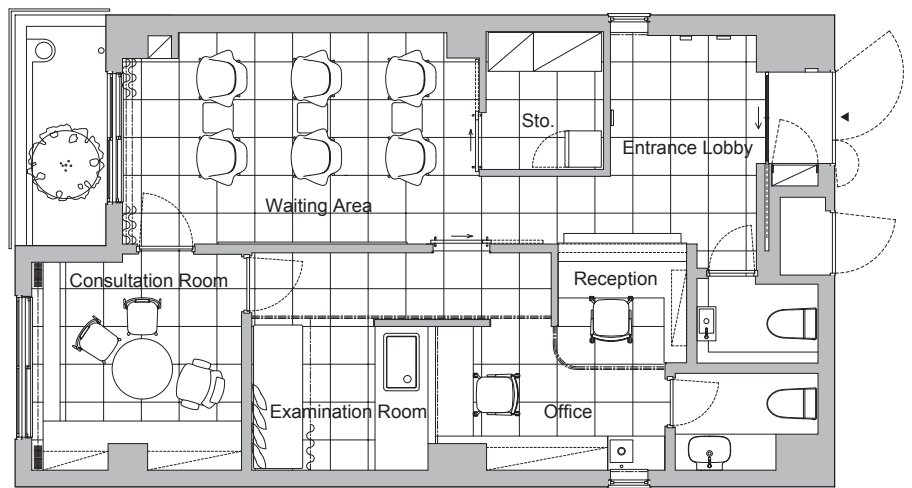












PLAN 1:100

IKEDA SHIYAKUSHOMAE CLINIC

Ikeda city, Osaka, Japan

Floor area: 61.07 m²

Completion: October 2016

<http://ikeda-s-clinic.jp/>

Credits

Architects: Yumi Zoraku / FIVES

in collaboration with Junko Kurihara

Signage & Branding: Takayoshi Kasuga / MILL inc

<http://mill-inc.co.jp>

Arts: art gallery closet

Contractor: Tanoura Construction Co.,Ltd.

Photographer: Takaaki Shirai

FIVES ARCHITECTURE & INTERIOR

Matsuishi Bldg. 502 1-8-9 Hiroo Shibuya-ku,
Tokyo Japan

Zip: 156-0051

Tel/Fax: +81-3-5420-6730

<http://5fives.jp>

Yumi Zoraku

Japanese First-class Registered Architect

Interior Designer

Adjunct Lecturer at Kokushikan University